

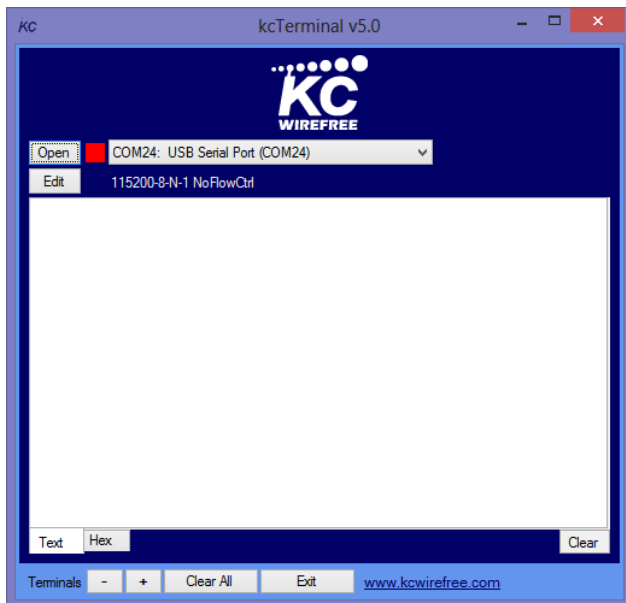
kcTerminal is a simple COM port terminal application, specially designed to work with our kcSerial and kcAudio firmware. Download and install kcTerminal v5.3

http://www.kcwirefree.com/docs/kcTerm_v5.3.zip

A USB to TTL serial cable like this works well to connect a Bluetooth module to a PC (USB virtual) COM port.



Launch kcTerminal.



Click COM port drop down box to select COM port.



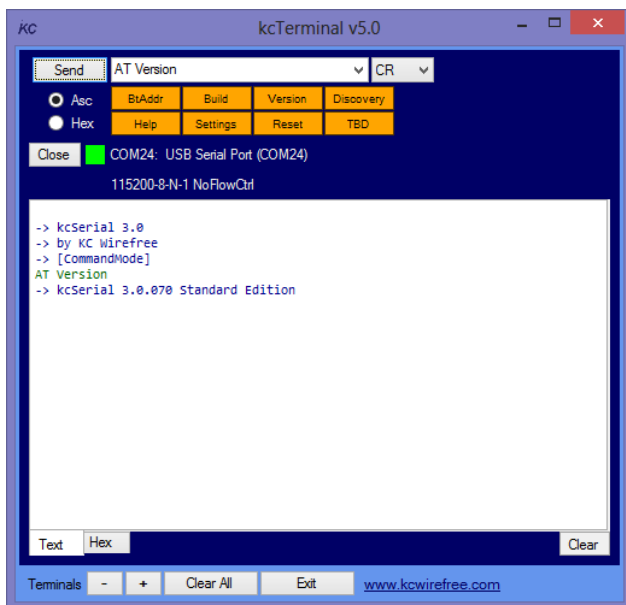
Click EDIT button to edit the COM port settings. Each COM port setting can be changed by clicking the drop down box. Click SAVE when finished.



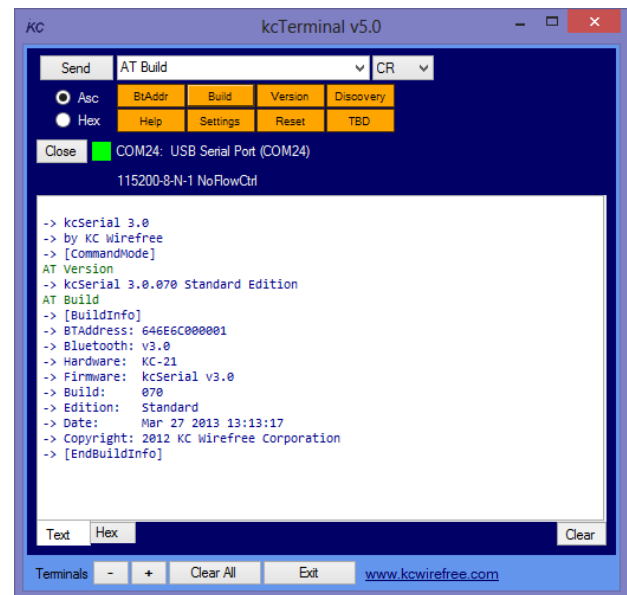
Click OPEN to open the selected COM port, with the selected configuration settings.



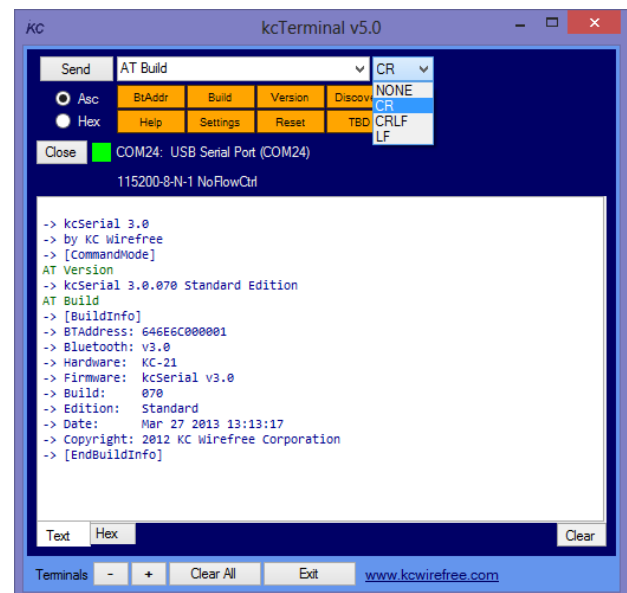
COM port is now open, and attached serial device should respond. Example, power up a kcSerial module, and enter the AT Version command, then press SEND.



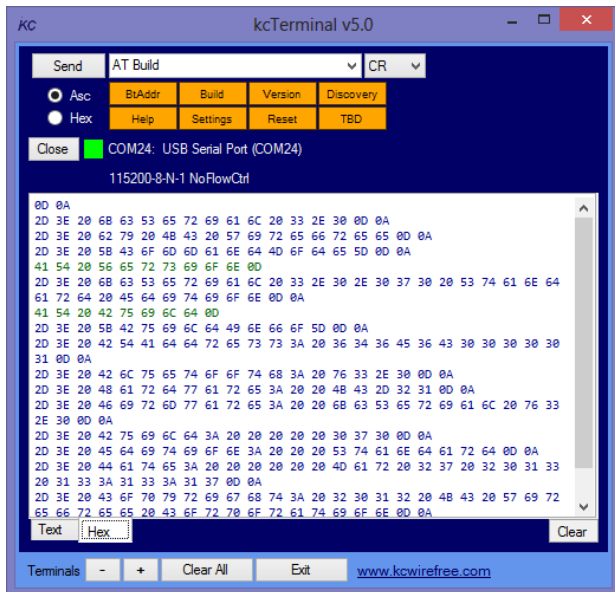
Gold buttons are shortcut commands, intended to work with kcSerial firmware. Click any button to issue the AT Command. The button adds the AT Command to the command drop down box, and automatically SENDS the command.



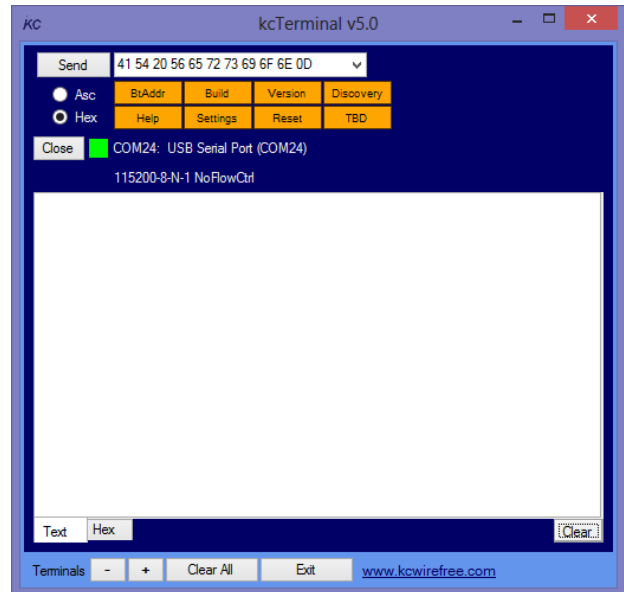
Click the End-Of-Line drop down box to change the EOL character(s).



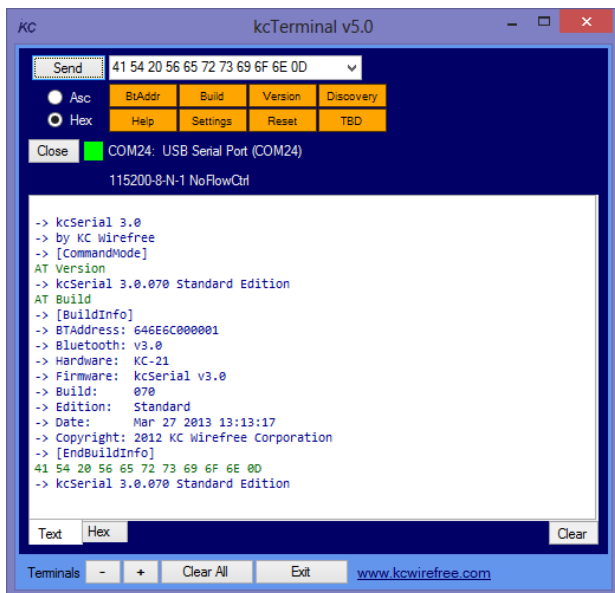
Click the Hex tab in the lower left corner, to see the ASCII hex code of input commands and device responses. Inputs are green and responses are blue. Line breaks are added for readability.



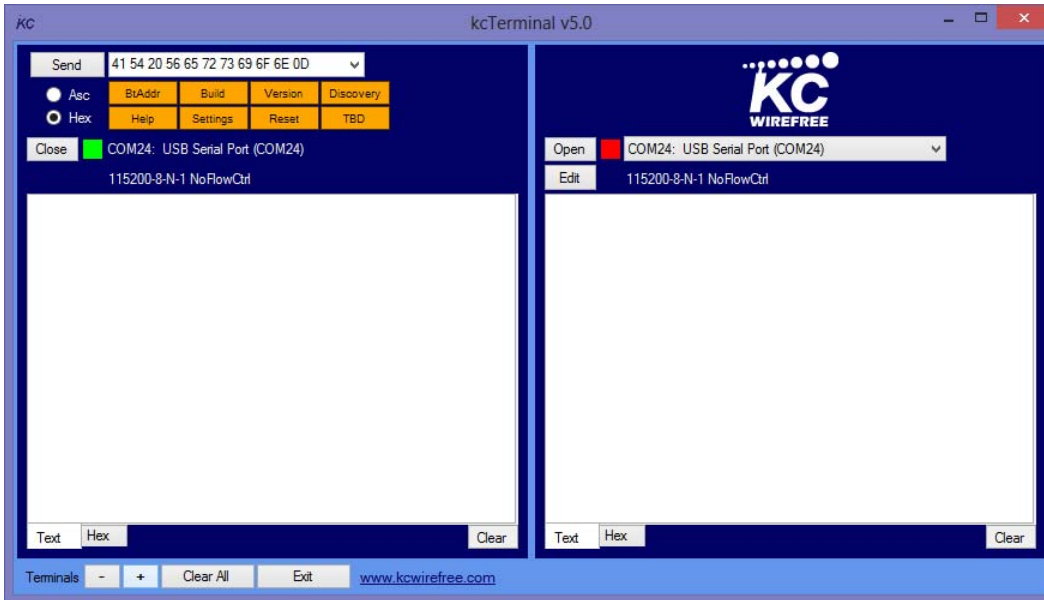
Click the CLEAR button in the lower left, to clear this terminal window (clears both Text and Hex tabs).



To enter data bytes directly, click the Hex radio button in the upper left. Note, the EOL characters are no longer added automatically in Hex mode. These must be added manually to the hex string if desired (0x0D).



Click the + button to up to 4 independent terminal windows.



Click the - button to remove the right-most terminal window.

